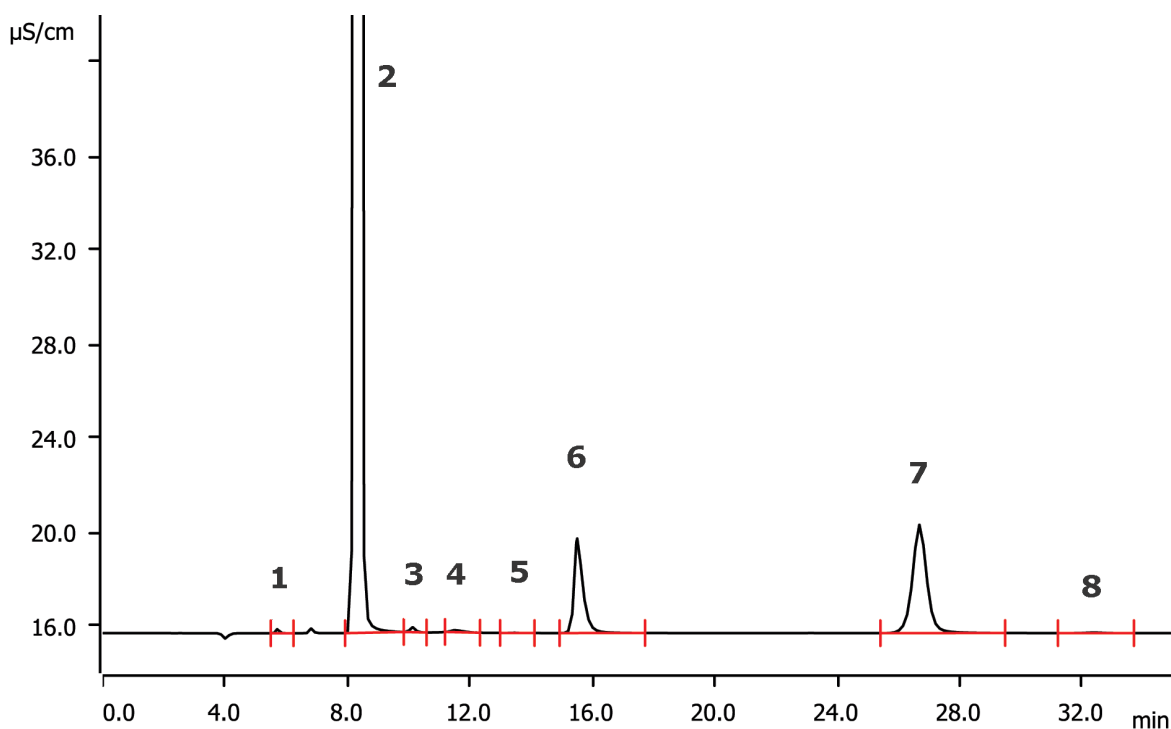


# Anions in wastewater using the Eco IC



The Eco IC is an entry-level ion chromatograph for routine water analysis. The instrument is equipped with a conductivity detector and can be operated with or without chemical suppression. Here, anions are determined in wastewater on the Metrosep A Supp 17 - 250/4.0 column. This column type is ideally suited for water analysis at ambient temperature.

## Results

Anion	Conc. [mg/L]	Anion	Conc. [mg/L]
1 Fluoride	n.q.	5 Bromide	n.q.
2 Chloride	102.7	6 Nitrate	21.5
3 Nitrite	n.q.	7 Sulfate	29.7
4 System peak (carbonate)	-	8 Phosphate	n.q.

## Sample

Wastewater

## Sample preparation

Metrohm Inline Ultrafiltration.

## Columns

Metrosep A Supp 17 - 250/4.0	6.01032.430
Metrosep A Supp 17 Guard/4.0	6.01032.500

## Solutions

Eluent	5.0 mmol/L sodium carbonate 0.2 mmol/L sodium hydrogen carbonate
Suppressor regenerant	100 mmol/L sulfuric acid
Rinsing solution	STREAM

## Analysis

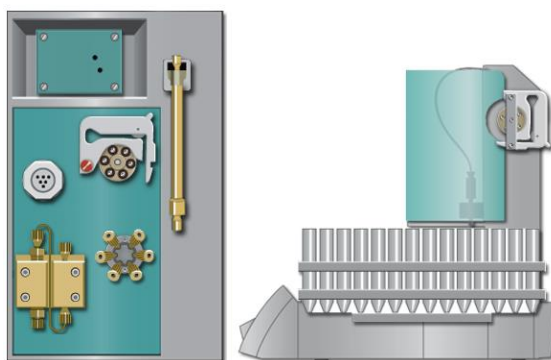
Conductivity detection after chemical suppression

## Instrumentation

Eco IC	2.925.0020
863 Compact IC Autosampler	2.863.0010
IC equipment: Inline Ultrafiltration	6.5330.110

## Parameters

Flow rate	0.6 mL/min
Injection volume	10 µL
P <sub>max</sub>	18 MPa
Recording time	34 min
Column temperature	ambient



[www.metrohm.com](http://www.metrohm.com)

 **Metrohm**