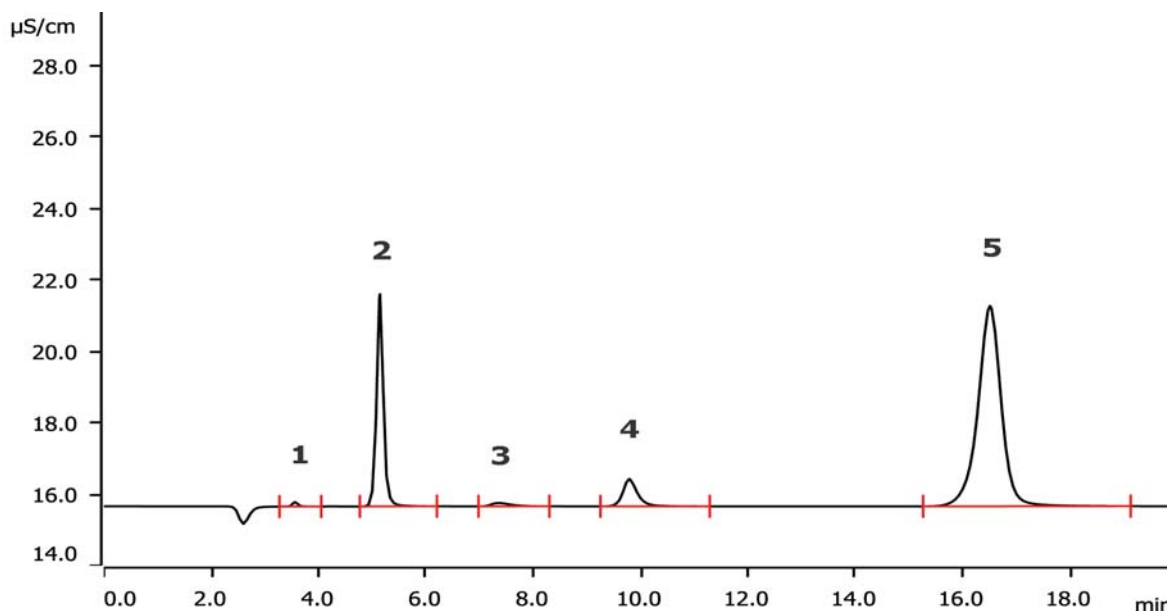


# Anions in drinking water using the Eco IC



The Eco IC is an entry-level ion chromatograph for routine water analysis. It is fully equipped with a conductivity detector and can be operated with and without chemical suppression. This application describes the determination of the anion content using the Metrosep A Supp 17 - 150/4.0 column. This column type is dedicated to water analysis at ambient temperature.

## Results

Anion	Conc. [mg/L]	Anion	Conc. [mg/L]
1 Fluoride	n.q.	4 Nitrate	4.06
2 Chloride	7.57	5 Sulfate	33.1
3 System peak (carbonate)	n.d.		

### Sample

Drinking water

### Sample preparation

Metrohm Inline Ultrafiltration.

### Columns

Metrosep A Supp 17 - 150/4.0	6.01032.420
Metrosep A Supp 17 Guard/4.0	6.01032.500

### Solutions

Eluent	5.0 mmol/L sodium carbonate 0.2 mmol/L sodium hydrogen carbonate
Suppressor regenerant	100 mmol/L sulfuric acid
Rinsing solution	STREAM

### Analysis

Conductivity detection after chemical suppression

### Instrumentation

Eco IC	2.925.0020
863 Compact IC Autosampler	2.863.0010
IC equipment: Inline Ultrafiltration	6.5330.110

### Parameters

Flow rate	0.6 mL/min
Injection volume	10 $\mu$ L
P <sub>max</sub>	18 MPa
Recording time	20 min
Column temperature	ambient

